

# SIFF cinema

**SIFF CINEMA DOWNTOWN**  
2100 4th Ave. • Seattle, WA 98121

**SIFF CINEMA EGYPTIAN**  
805 E Pine St. • Seattle, WA 98122

**SIFF CINEMA UPTOWN**  
511 Queen Anne Ave. N • Seattle, WA 98109

**SIFF FILM CENTER**  
167 Republican St. • Seattle, WA 98109

## NOVEMBER 2024 HIGHLIGHTS



### Anora

CLOSES NOV 14 • UPTOWN  
OPENS NOV 15 • EGYPTIAN

Anora, a young sex worker from Brooklyn, gets her chance at a Cinderella story when she meets and impulsively marries the son of an oligarch. Once the news reaches Russia, her fairytale is threatened as the parents set out for New York to get the marriage annulled. *Cannes 2024 Palme d'Or winner.*

SIFF education  
**CINEMA DISSECTION**

BLOOD SIMPLE 11/2  
Children of men 11/23

SIFF FILM TALKS

**SKAOTN ANIME AUTEUR**

NOV. 5-26 • 7PM-9PM • SIFF FILM CENTER

Dive into the surreal worlds of Satoshi Kon, one of Japan's most innovative and influential animators. This four-part film talk series will explore Kon's unique approach to storytelling, his mastery of blending reality and fantasy, and the psychological depth that characterizes his films.

NOV 7-14, 2024 • SIFF CINEMA UPTOWN • SIFF.NET/CIS

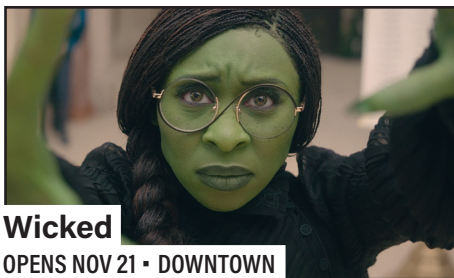
**CINEMA ITALIAN STYLE**  
*cinema all italiana*

SIFF

# NOVEMBER 2024 FILM SCHEDULE\*

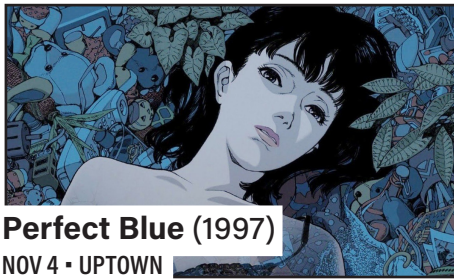
\*Schedule is subject to change. Please check SIFF.NET for up-to-date information.

SUNDAY	MONDAY	TUESDAY	WEDNESDAY	THURSDAY	FRIDAY	SATURDAY
<p>Sundays &amp; Tuesdays: <b>Open Caption Screenings</b></p> <p>Mondays: <b>Discount Movie Mondays</b></p> <p><i>Available for select films; see SIFF.NET</i></p>			<p>[D] <b>SIFF CINEMA DOWNTOWN</b></p> <p>[U] <b>SIFF CINEMA UPTOWN</b></p> <p>[E] <b>SIFF CINEMA EGYPTIAN</b></p> <p>[F] <b>SIFF FILM CENTER</b></p>		<p><b>1</b> [D] <i>Ghibli</i>: Spirited Away [D] <i>Ghibli</i>: My Neighbor Totoro [U] Anora [U] Conclave [U] Romanian Film Festival Seattle [E] Thieves Like Us</p>	<p><b>2</b> [D] <i>Ghibli</i>: Ponyo [D] <i>Ghibli</i>: Castle in the Sky [D] <i>Ghibli</i>: The Wind Rises [U] Anora [U] Conclave [U] Romanian Film Festival Seattle [E] Arc'teryx Winter Film Tour [F] Like a Rolling Stone [F] <i>Cinema Dissection</i>: Blood Simple</p>
<p><b>3</b> [D] <i>Ghibli</i>: My Neighbor Totoro [D] <i>Ghibli</i>: The Cat Returns [D] <i>Ghibli</i>: Princess Mononoke [U] Anora [U] Conclave [U] Romanian Film Festival Seattle [E] Like a Rolling Stone</p>	<p><b>4</b> [D] <i>Ghibli</i>: Porco Rosso [D] <i>Ghibli</i>: When Marnie Was There [U] Anora [U] Conclave [U] Perfect Blue [E] Know Your Place</p>	<p><b>5</b> [D] <i>Ghibli</i>: My Neighbor Totoro [D] <i>Ghibli</i>: The Secret World of Arrietty [U] Anora [U] Conclave [E] Election Watch Party [F] <i>Film Talk</i>: Satoshi Kon Pt. 1</p>	<p><b>6</b> [D] <i>Ghibli</i>: Nausicaä of the Valley of the Wind [D] <i>Ghibli</i>: Ponyo [U] Anora [U] Conclave [U] <i>SIFF Movie Club</i>: Koyaanisqatsi [E] <i>Powell &amp; Pressburger</i>: Gone to Earth [E] The Sacrifice</p>	<p><b>7</b> [D] <i>Ghibli</i>: Princess Mononoke [D] <i>Ghibli</i>: Nausicaä of the Valley of the Wind [U] Anora [U] Conclave [U] <i>Cinema Italian Style</i>: There's Still Tomorrow [E] Know Your Place</p>	<p><b>8</b> [D] <i>Ghibli</i>: The Wind Rises [D] <i>Ghibli</i>: Castle in the Sky [U] Anora [U] Conclave [U] <i>Cinema Italian Style</i>: What A Life! [U] <i>Cinema Italian Style</i>: Marscarpone - The Rainbow Cake [E] Seattle Polish Film Festival [F] Black Box Diaries</p>	<p><b>9</b> [D] <i>Ghibli</i>: Spirited Away [D] <i>Ghibli</i>: Howl's Moving Castle [U] Anora [U] Conclave [U] <i>Cinema Italian Style</i>: Family Matters [U] <i>Cinema Italian Style</i>: My Place is Here [U] <i>Cinema Italian Style</i>: The Life Apart [E] Seattle Polish Film Festival [F] Black Box Diaries [F] Lynden</p>
<p><b>10</b> [D] <i>Ghibli</i>: Howl's Moving Castle [D] <i>Ghibli</i>: Princess Mononoke [D] <i>Ghibli</i>: Spirited Away [U] Anora [U] Conclave [U] <i>Cinema Italian Style</i>: Il Grido [U] <i>Cinema Italian Style</i>: The War Machine [U] <i>Cinema Italian Style</i>: My Killer Buddy [E] Seattle Polish Film Festival [F] Black Box Diaries</p>	<p><b>11</b> [D] <i>Ghibli</i>: Castle in the Sky [D] <i>Ghibli</i>: The Cat Returns [U] Anora [U] Conclave [U] <i>Cinema Italian Style</i>: Patagonia [U] Paprika [E] The Sacrifice</p>	<p><b>12</b> [D] <i>Ghibli</i>: The Secret World of Arrietty [D] <i>Ghibli</i>: Porco Rosso [U] Anora [U] Conclave [U] <i>Cinema Italian Style</i>: A Dark Story [U] <i>Cinema Italian Style</i>: Misericordia [U] Classified Cinema [E] The Sacrifice [F] <i>Film Talk</i>: Satoshi Kon Pt. 2</p>	<p><b>13</b> [D] <i>Ghibli</i>: When Marnie Was There [D] <i>Ghibli</i>: The Wind Rises [U] Anora [U] Conclave [U] <i>Cinema Italian Style</i>: In the Mirror [U] <i>Cinema Italian Style</i>: Trust [E] The Sacrifice [E] <i>Powell &amp; Pressburger</i>: The Tales of Hoffmann</p>	<p><b>14</b> [D] <i>Ghibli</i>: Ponyo [D] <i>Ghibli</i>: Howl's Moving Castle [U] Anora [U] Conclave [U] <i>Cinema Italian Style</i>: Vermiglio [U] A Real Pain [E] The Sacrifice</p>	<p><b>15</b> [D] <i>Shrek Week</i>: Shrek [D] <i>Shrek Week</i>: Shrek 2 [U] Conclave [U] A Real Pain [U] Seattle Turkish Film Festival [E] Anora</p>	<p><b>16</b> [D] <i>Shrek Week</i>: Shrek [D] <i>Shrek Week</i>: Shrek 2 [D] <i>Shrek Week</i>: Shrek the Third [D] <i>Shrek Week</i>: Shrek Forever After [U] Conclave [U] A Real Pain [U] Seattle Turkish Film Festival [U] Anora</p>
<p><b>17</b> [D] <i>Shrek Week</i>: Shrek Forever After [D] <i>Shrek Week</i>: Shrek the Third [D] <i>Shrek Week</i>: Shrek 2 [D] <i>Shrek Week</i>: Shrek [U] Conclave [U] A Real Pain [U] Seattle Turkish Film Festival [U] <i>Reel Black</i>: A Wrinkle in Time [E] Anora</p>	<p><b>18</b> [D] <i>Shrek Week</i>: Puss in Boots [D] <i>Shrek Week</i>: Puss in Boots: The Last Wish [U] Conclave [U] A Real Pain [U] Survivor Made [U] Millennium Actress [E] Anora</p>	<p><b>19</b> [D] <i>Shrek Week</i>: Shrek 2 [U] Conclave [U] A Real Pain [U] 48 Hour Horror Film Project Awards [E] Anora [E] Scope Screenings [F] <i>Film Talk</i>: Satoshi Kon Pt. 3</p>	<p><b>20</b> [U] Conclave [U] A Real Pain [U] No Place to Grow Old [E] Anora [E] <i>Powell &amp; Pressburger</i>: Peeping Tom</p>	<p><b>21</b> [D] Wicked [U] Conclave [U] A Real Pain [U] A Real Pain [E] Anora [E] <i>UNSTREAMABLE</i>: Gummo</p>	<p><b>22</b> [D] Wicked [U] A Real Pain [U] Dahomey [E] Anora [E] Caligula (35mm)</p>	<p><b>23</b> [D] Wicked [U] A Real Pain [U] Dahomey [E] Anora [E] Caligula (35mm) [F] <i>Cinema Dissection</i>: Children of Men</p>
<p><b>24</b> [D] Wicked [U] A Real Pain [U] Dahomey [U] Breakfast of Champions [E] Anora [E] Return</p>	<p><b>25</b> [D] Wicked [U] A Real Pain [U] Dahomey [U] Tokyo Godfathers [E] Anora</p>	<p><b>26</b> [D] Wicked [U] A Real Pain [U] Dahomey [E] Anora [F] <i>Film Talk</i>: Satoshi Kon Pt. 4</p>	<p><b>27</b> [D] Wicked [U] A Real Pain [U] Dahomey [E] Anora</p>	<p><b>28</b> [D] Wicked [U] A Real Pain [U] Dahomey [E] Anora</p>	<p><b>29</b> [D] Wicked [U] A Real Pain [U] All We Imagine as Light [E] Anora</p>	<p><b>30</b> [D] Wicked [U] A Real Pain [U] All We Imagine as Light [E] Anora</p>



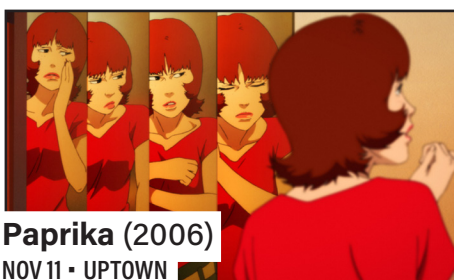
**Wicked**  
OPENS NOV 21 • DOWNTOWN

*Wicked*, the untold story of the witches of Oz, stars powerhouse Cynthia Erivo as Elphaba, misunderstood because of her unusual green skin, who has yet to discover her true power, and superstar Ariana Grande as Glinda, gilded by privilege, who has yet to discover her true heart. Enjoy a photo op, concessions specials, and more surprises at the best cinema in the Emerald City!



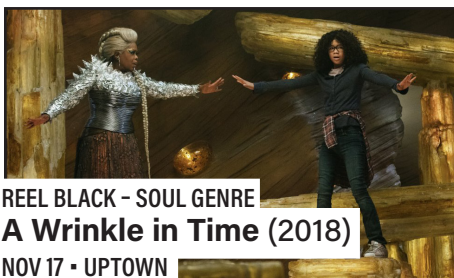
**Perfect Blue (1997)**  
NOV 4 • UPTOWN

Rising pop star Mima has quit singing to pursue a career as an actress and model, but her fans aren't ready to see her go... Encouraged by her managers, Mima takes on a recurring role on a popular TV show, when suddenly her handlers and collaborators begin turning up murdered.



**Paprika (2006)**  
NOV 11 • UPTOWN

Dr. Atsuko Chiba uses a new invention to enter the dreams of her mysteriously troubled patients. When the device is stolen, only Atsuko and her dream alter-ego Paprika can save Tokyo from an apocalyptic dissolution of dreams and reality.



REEL BLACK - SOUL GENRE  
**A Wrinkle in Time (2018)**  
NOV 17 • UPTOWN

In a mesmerizing journey across dimensions, a young girl, guided by celestial beings, confronts darkness to find her missing father. This visually stunning 2018 film weaves a tale of love, resilience, and self-discovery.



**Dahomey**  
NOV 22-28 • UPTOWN

Blurring the line between fiction and documentary, the Golden Bear-winning new film from Mati Diop exploring France's repatriation of Benin's royal treasures is a poignant commentary on the role of museums and the enduring ghosts of colonialism. Senegal's Official Oscar Submission (Best International Feature Film).



**Tokyo Godfathers (2003)**  
NOV 25 • UPTOWN

Middle-aged alcoholic Gin, teenage runaway Miyuki and former drag queen Hana are a trio of homeless people surviving as a makeshift family on the streets of Tokyo. While rummaging in the trash for food on Christmas Eve, they stumble upon an abandoned newborn baby in a trash bin.



**Conclave**  
NOW PLAYING • UPTOWN

Oscar nominees Ralph Fiennes and Stanley Tucci lead a brilliant ensemble cast in this stunning adaptation of Robert Harris' high-stakes drama, in which Cardinals gather at the Vatican to elect a new Pope.



SIFF MOVIE CLUB  
**Koyaanisqatsi (1982)**  
NOV 6 • UPTOWN

Drawing its title from the Hopi word meaning "life out of balance," this renowned documentary reveals how humanity has grown apart from nature. Introduced by *Cinema Rentals Manager Patrick McFarland*.



**A Real Pain**  
OPENS NOV 14 • UPTOWN

Mismatched cousins David and Benji reunite for a tour through Poland to honor their beloved grandmother. The adventure takes a turn when the odd-couple's old tensions resurface against the backdrop of their family history. *Sundance 2025 Waldo Salt Screenwriting Award: U.S. Dramatic*.



**Millennium Actress (2001)**  
NOV 18 • UPTOWN

When the legendary Ginei Studios shuts down, filmmaker Genya Tachibana and his assistant are tasked with interviewing its reclusive star, Chiyoko Fujiwara, who had retired from the spotlight 30 years prior.



DIRECTOR Q&A  
**Breakfast of Champions (1999)**  
NOV 24 • UPTOWN

This delirious adaptation of Kurt Vonnegut's novel takes place in a fictional town where wealthy Pontiac dealer Dwayne Hoover meets Vonnegut's signature character, philosopher Kilgore Trout and goes from an All-American business leader to a man with a deep existential crisis. *Director Alan Rudolph scheduled to attend*.



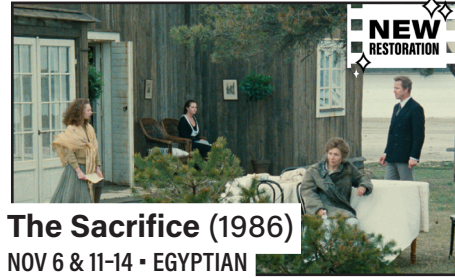
**All We Imagine as Light**  
NOV 29-DEC 5 • UPTOWN

In Mumbai, Nurse Prabha's routine is troubled when she receives an unexpected gift from her estranged husband. Her younger roommate, Anu, tries in vain to find a spot in the city to be intimate with her boyfriend.



DIRECTOR Q&A  
**Know Your Place (2022)**  
NOV 4 & 7 • EGYPTIAN

Gentrification's impact on Seattle's East African community is explored as two teenage boys navigate the city on an errand. *2022 Seattle International Film Festival Golden Space Needle Award - Best Film. Post-film Q&A on November 4.*



NEW RESTORATION  
**The Sacrifice (1986)**  
NOV 6 & 11-14 • EGYPTIAN

The family descends into a state of psychological devastation, brilliantly evoked by Andrei Tarkovsky's arresting palette of luminous greys washing over the bleak landscape around their home. The film's masterful cinematography is by Sven Nykvist, Ingmar Bergman's longtime collaborator.



POWELL & PRESSBURGER  
**Peeping Tom (1960)**  
NOV 20 • EGYPTIAN

A psychologist experiments on his young son, who grows into a gentle, photography-obsessed man who lives to see fear on others' faces. Can we sympathize with a murderer? Powell calls this a "tender film," full of empathy for a twisted soul.



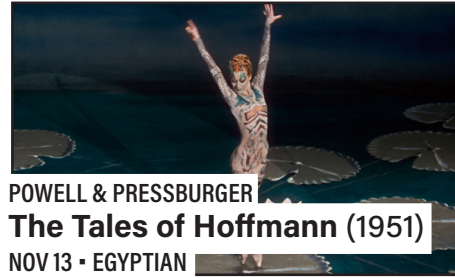
35m  
**Caligula (1979)**  
NOV 22 & 23 • EGYPTIAN

Shadowed by the murder of his family, Caligula (Malcolm McDowell) eliminates his devious adoptive grandfather (Peter O'Toole) and seizes control of the Roman Empire alongside his wife Caesonia (Helen Mirren) before descending into a spiral of depravity, destruction, and madness.



POWELL & PRESSBURGER  
**Gone to Earth (1950)**  
NOV 6 • EGYPTIAN

A nature girl of the Welsh hills is courted by a pious vicar and tempted by a roguish squire. Amidst an evocatively rendered sense of place, sacred and profane love entwine in the Celtic twilight.



POWELL & PRESSBURGER  
**The Tales of Hoffmann (1951)**  
NOV 13 • EGYPTIAN

Set to Jacques Offenbach's enchanting music, an archetypal Poet courts women, his muses, in various lands and times, ever pursued by his nemesis. Delectably intoxicating.



UNSTREAMABLE  
**Gummo (1997)**  
NOV 21 • EGYPTIAN

Lonely residents of a tornado-stricken Ohio town wander the deserted landscape trying to fulfill their boring, nihilistic lives.



BEST OF FEST  
**Black Box Diaries**  
NOV 8-10 • FILM CENTER

In this nonfiction procedural that cuts right to the heart, a journalist takes on Japan's patriarchal sociopolitical system as she investigates her own sexual assault, using her camera to detail every step of the grueling eight-year process to attain justice. *Winner of the Lena Sharpe Award for Persistence of Vision (Seattle International Film Festival 2024).*

THE ART OF  
**STUDIO GHIBLI**  
スタジオジブリ作品

SIFF CINEMA DOWNTOWN • NOVEMBER 1-14

NOVEMBER 15-19 • SIFF CINEMA DOWNTOWN • SIFF.NET

**SHREK WEEK**

THANK YOU TO OUR SIFF CINEMA SPONSORS

